
Data Interpolation and Extraction

Using ArcGIS 10



RICE

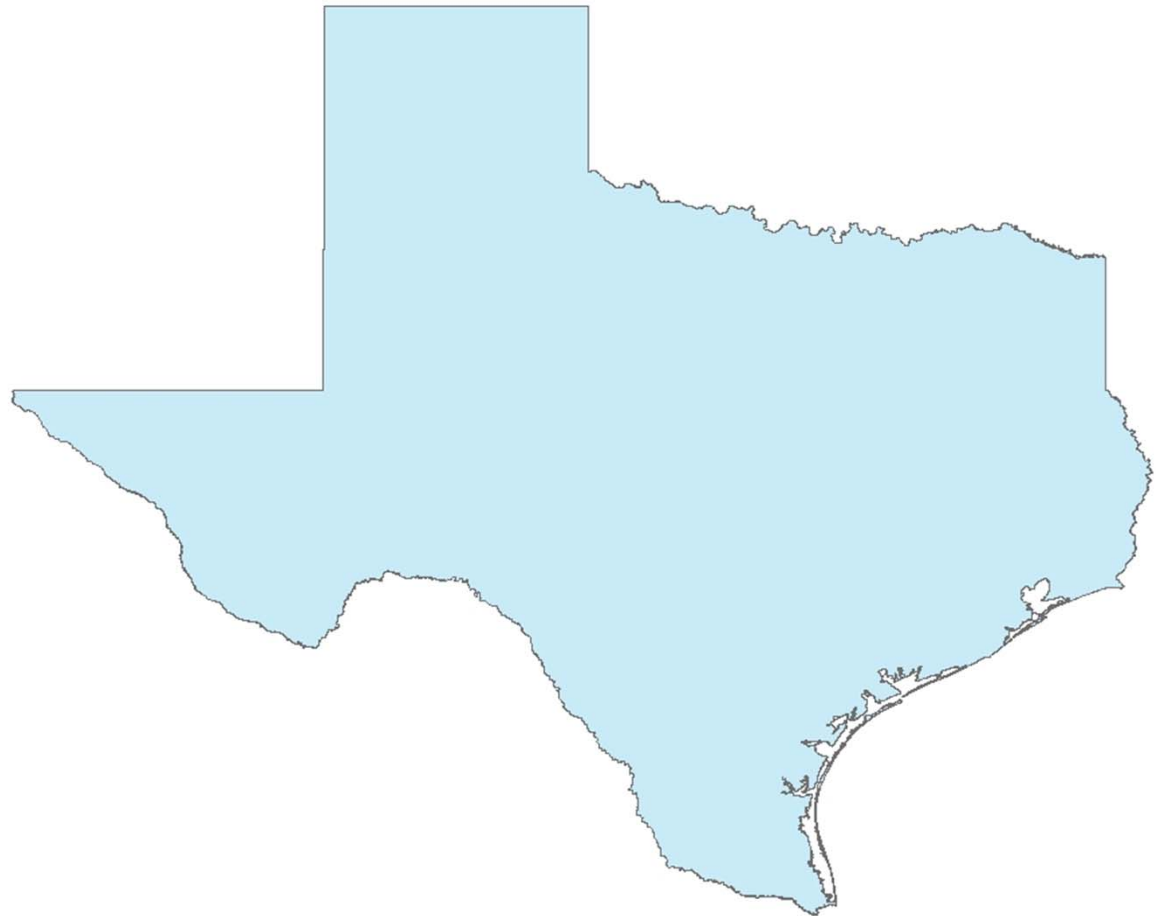
Fondren Library
GIS/Data Center



Data Types

Vector Data

- Polygons



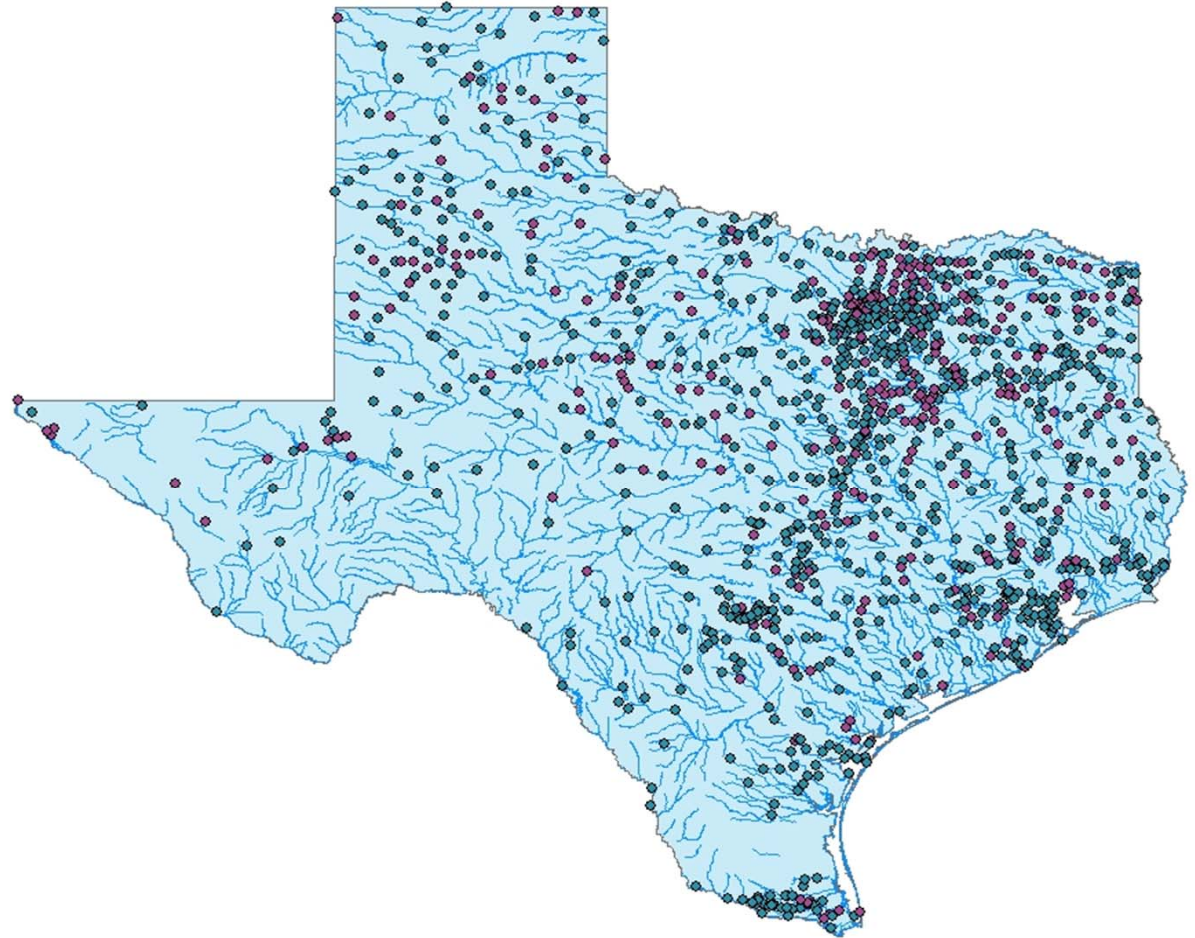
Vector Data

- Polygons
- Lines

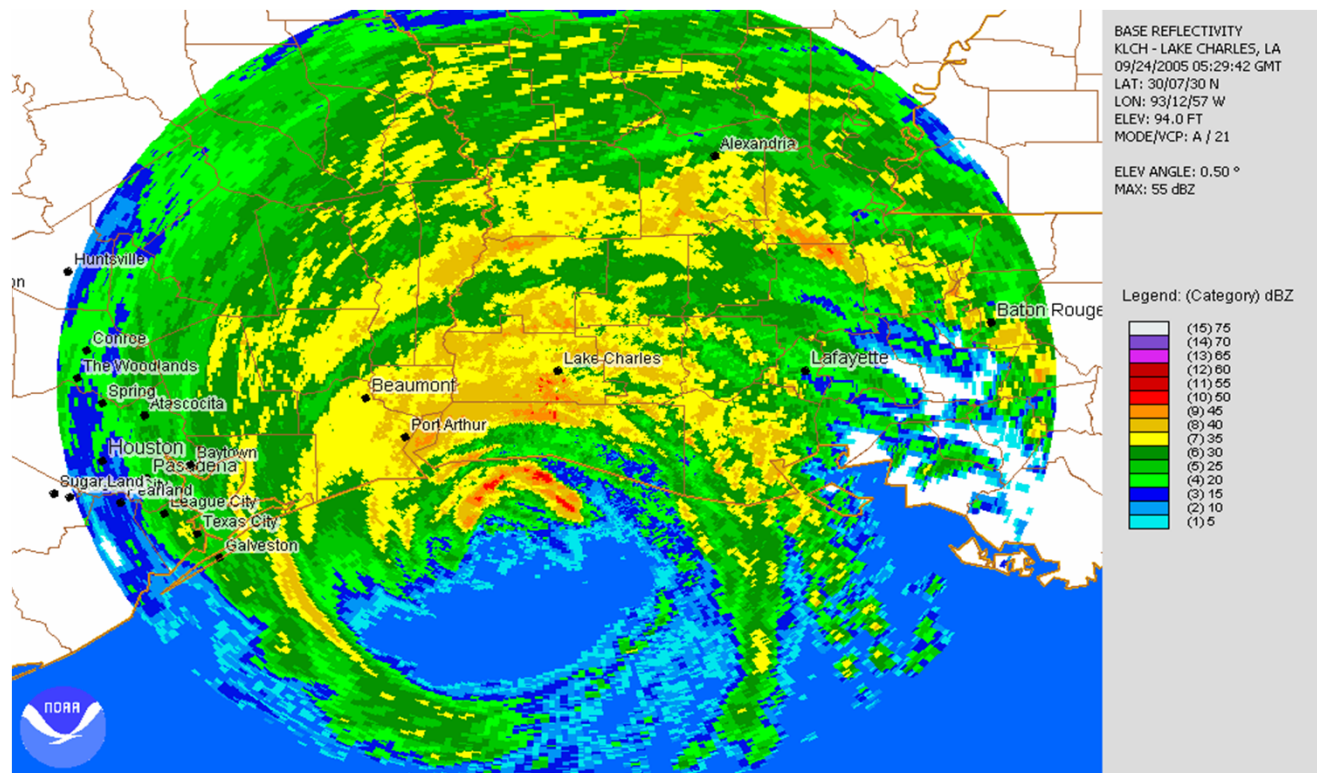


Vector Data

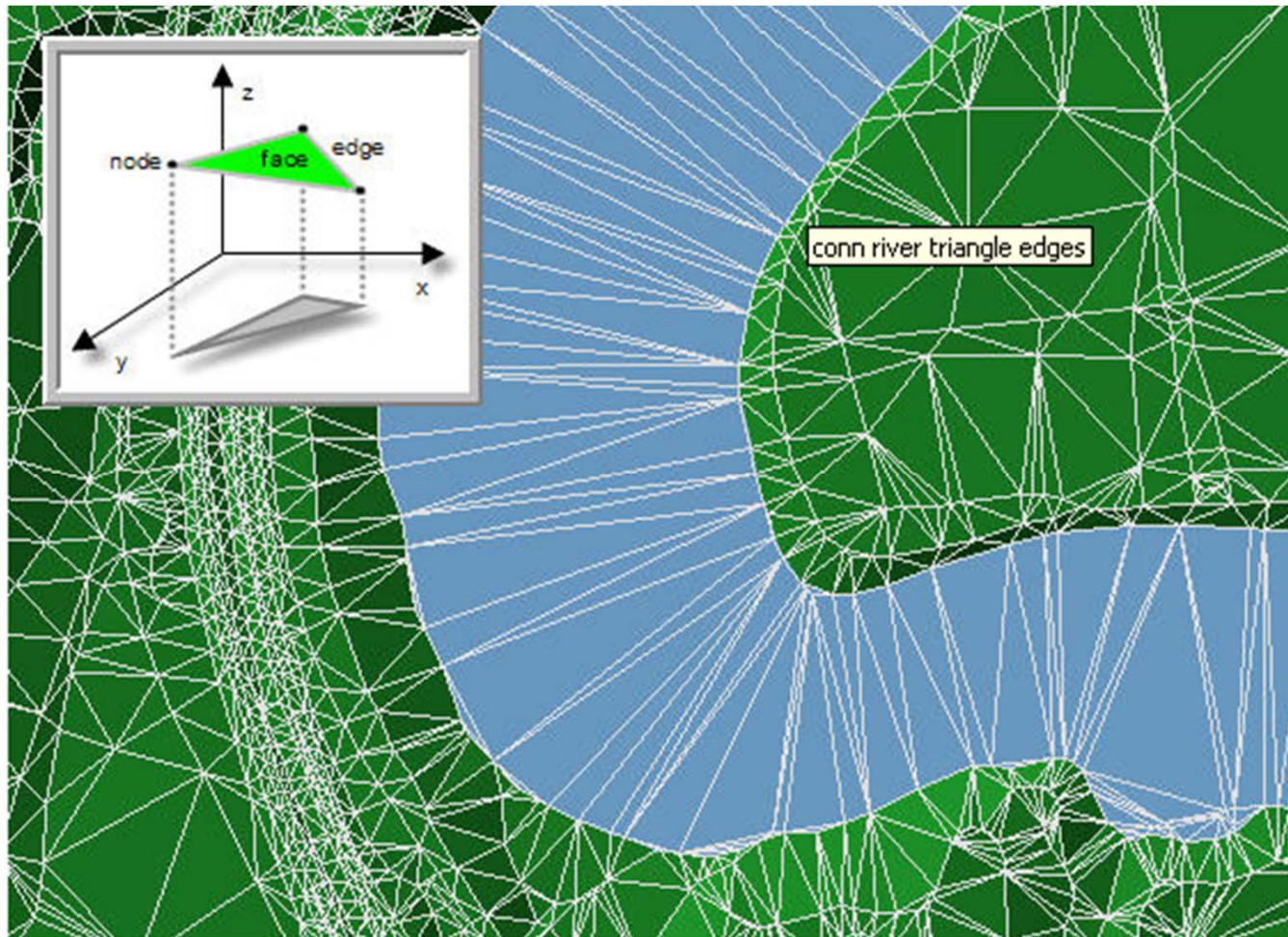
- Polygons
- Lines
- Points



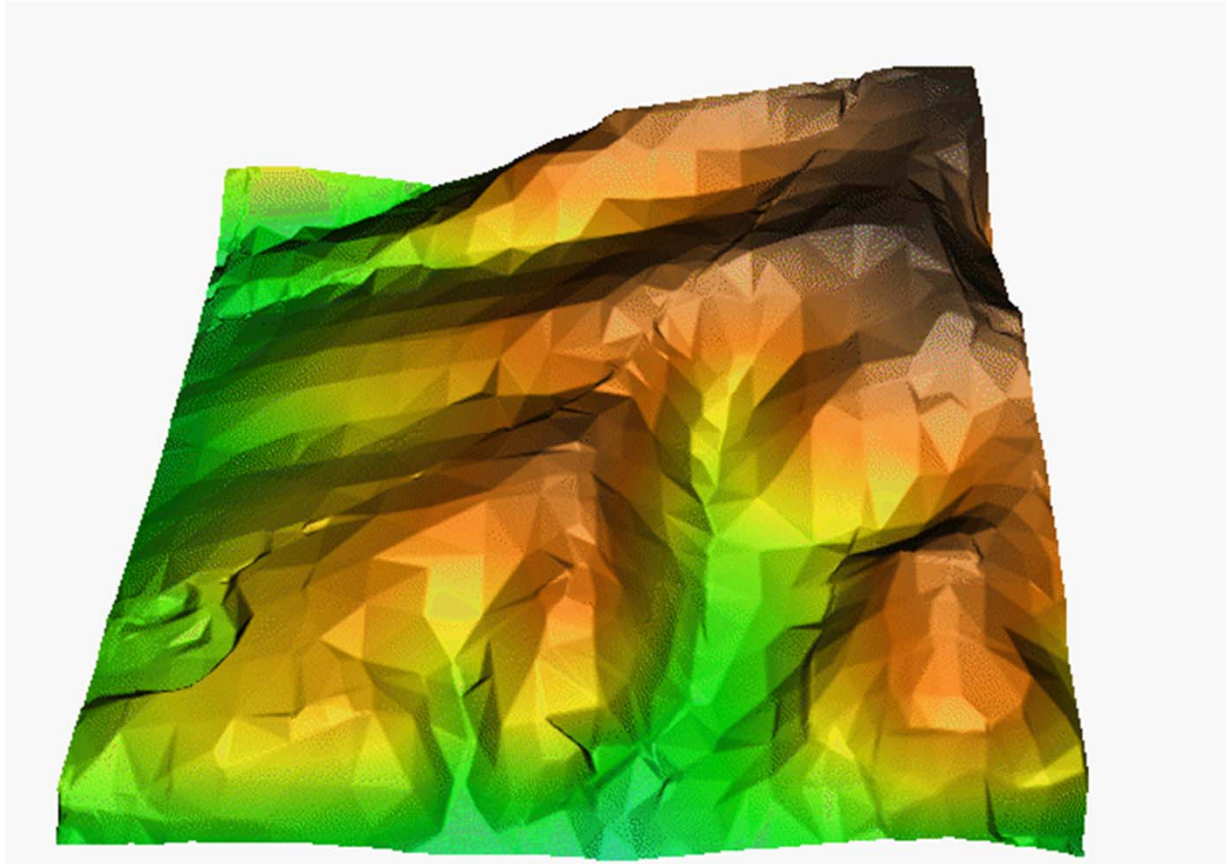
Raster Data



TIN Data



TIN Data

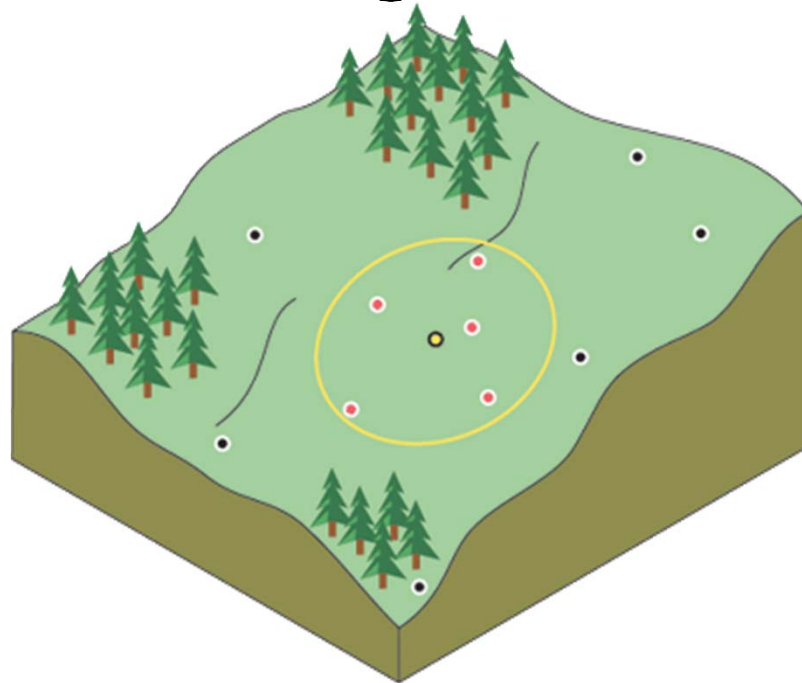


== Data Interpolation ==

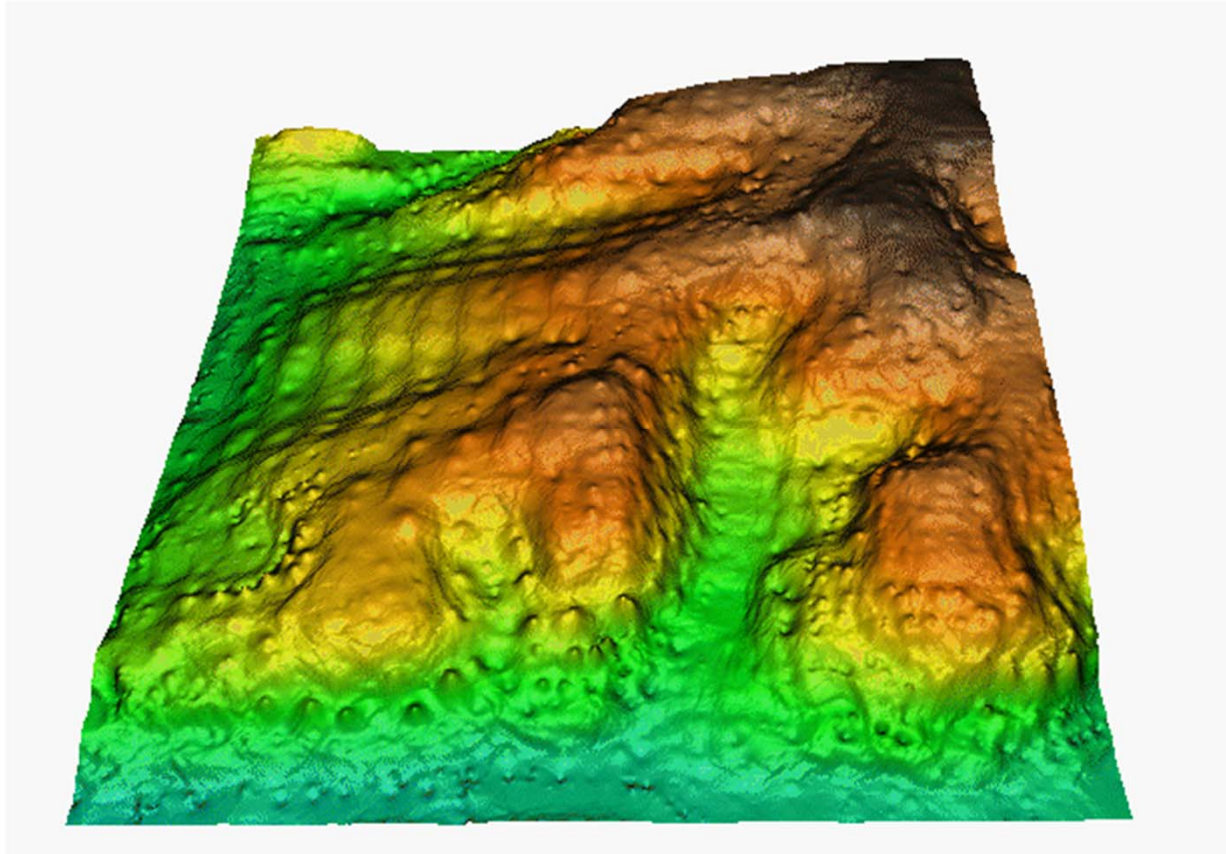
Methods

Inverse Distance Weighted

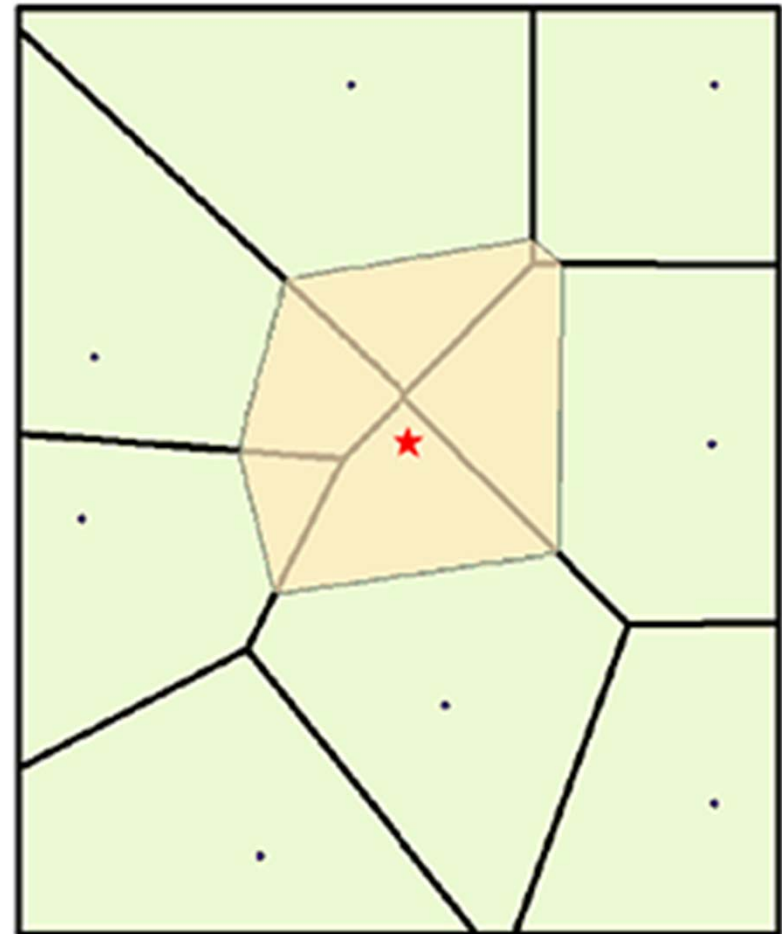
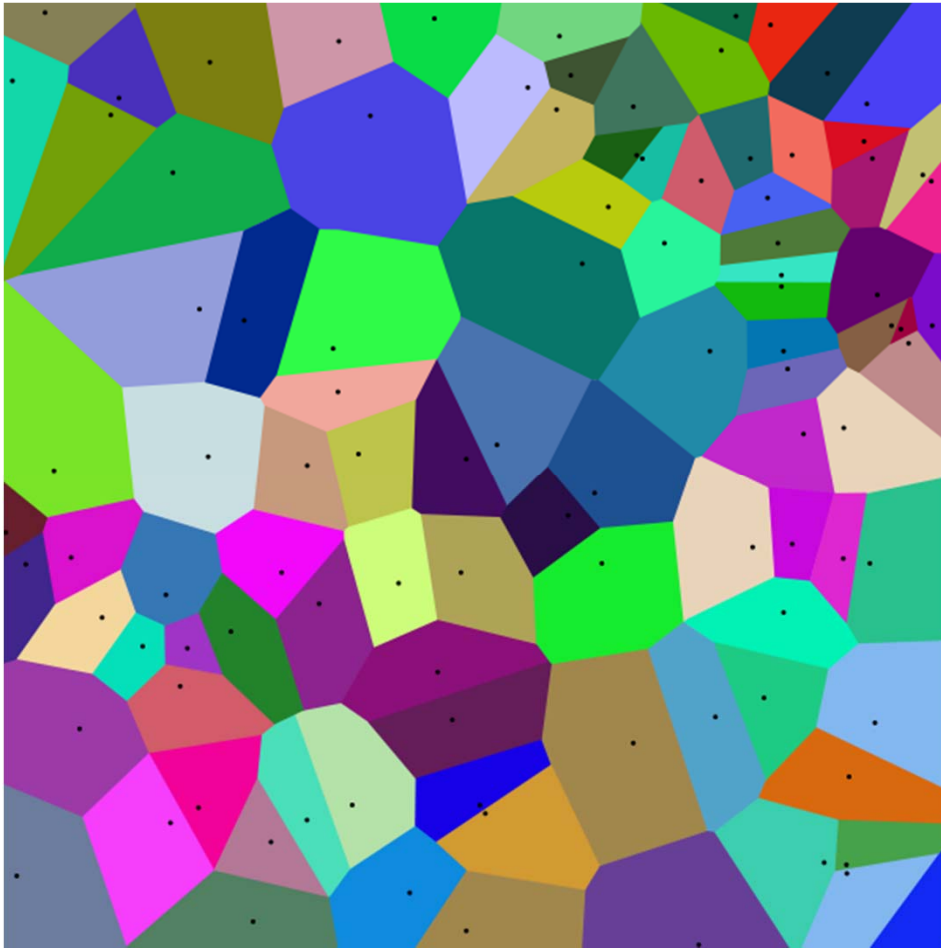
Estimates the value of a cell based on the value and distance of nearby data points and is weighted so that nearby data points have a greater influence on the value



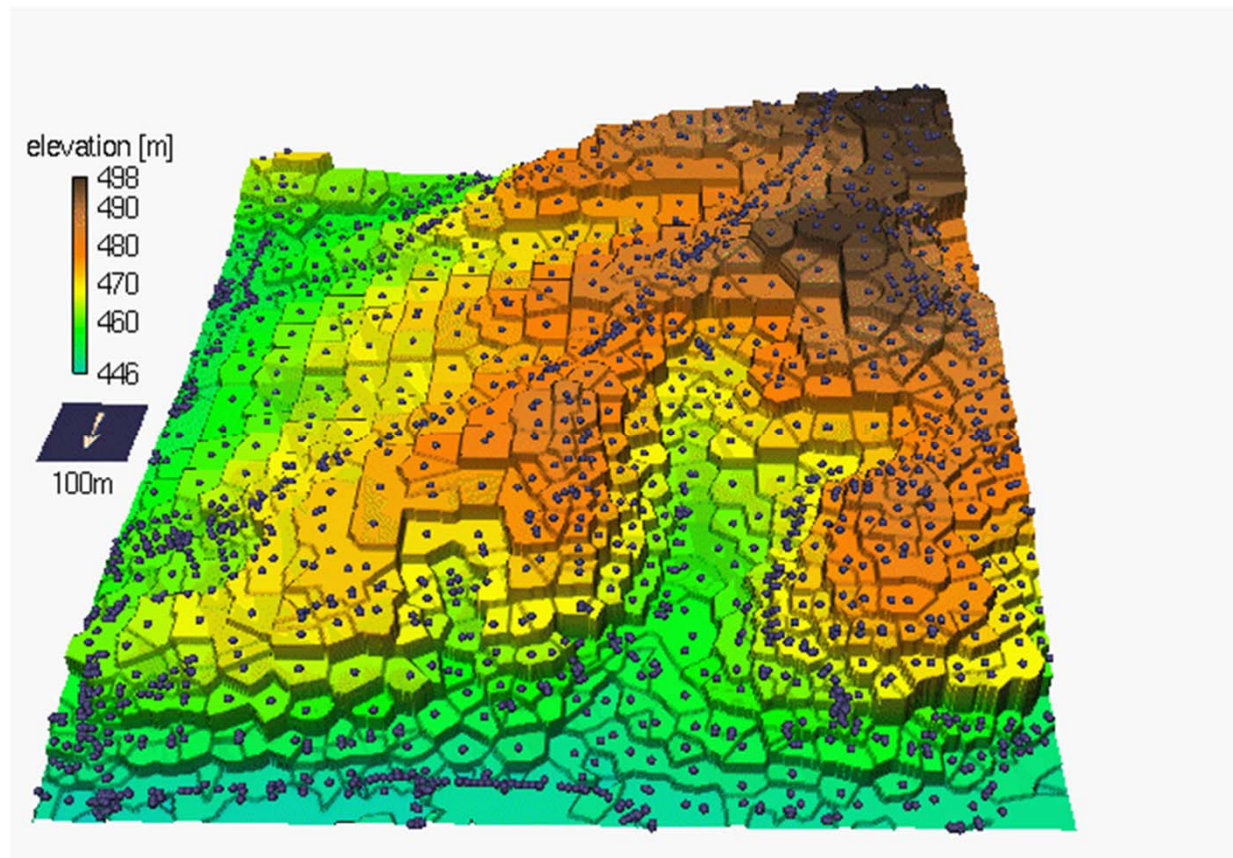
Inverse Distance Weighted



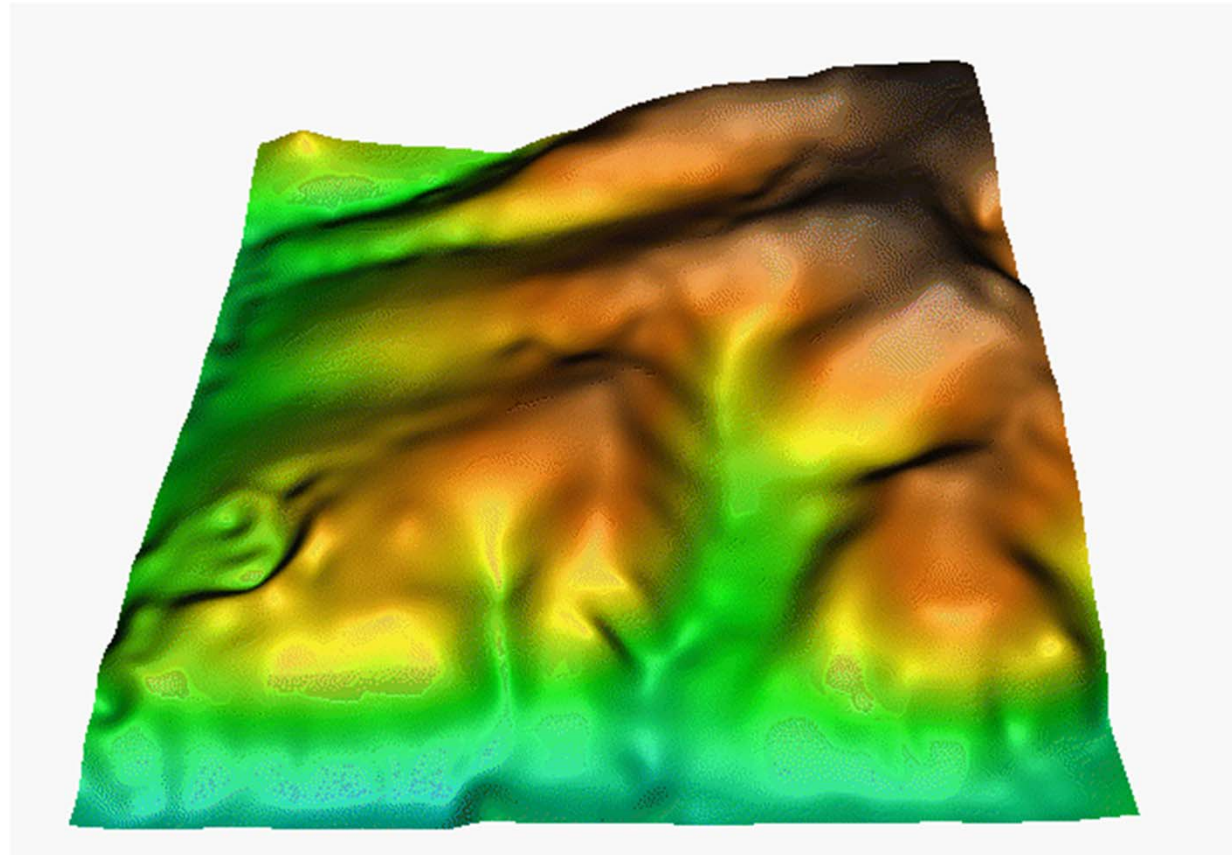
Natural Neighbors



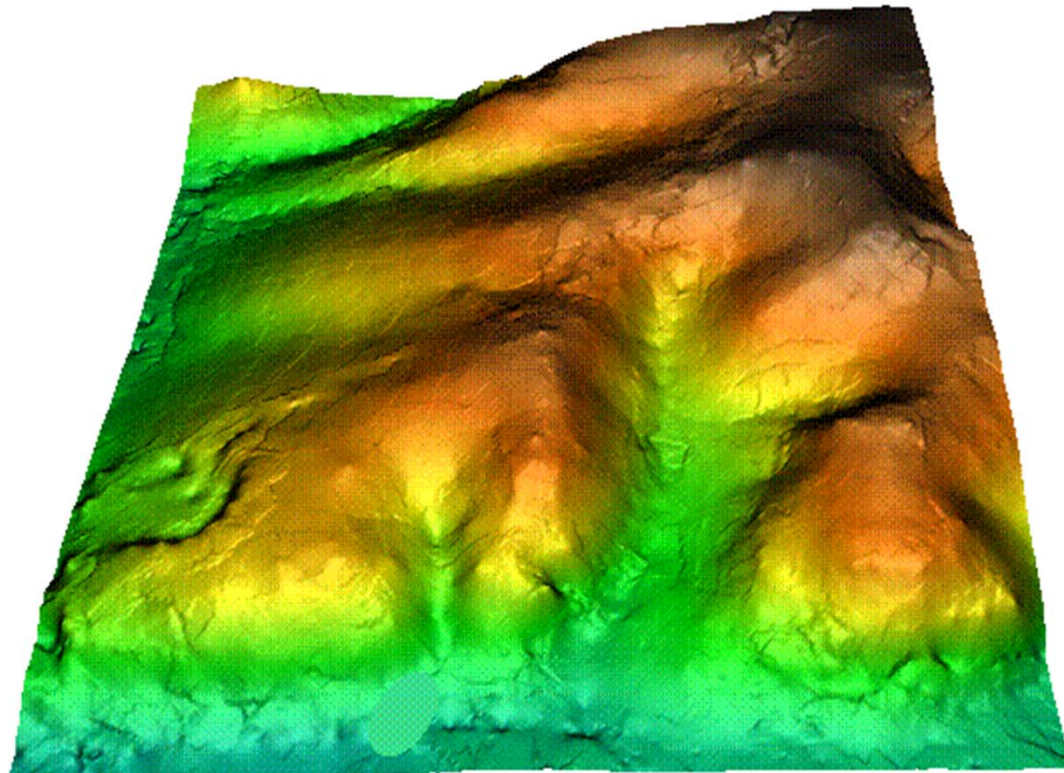
Natural Neighbors



Spline



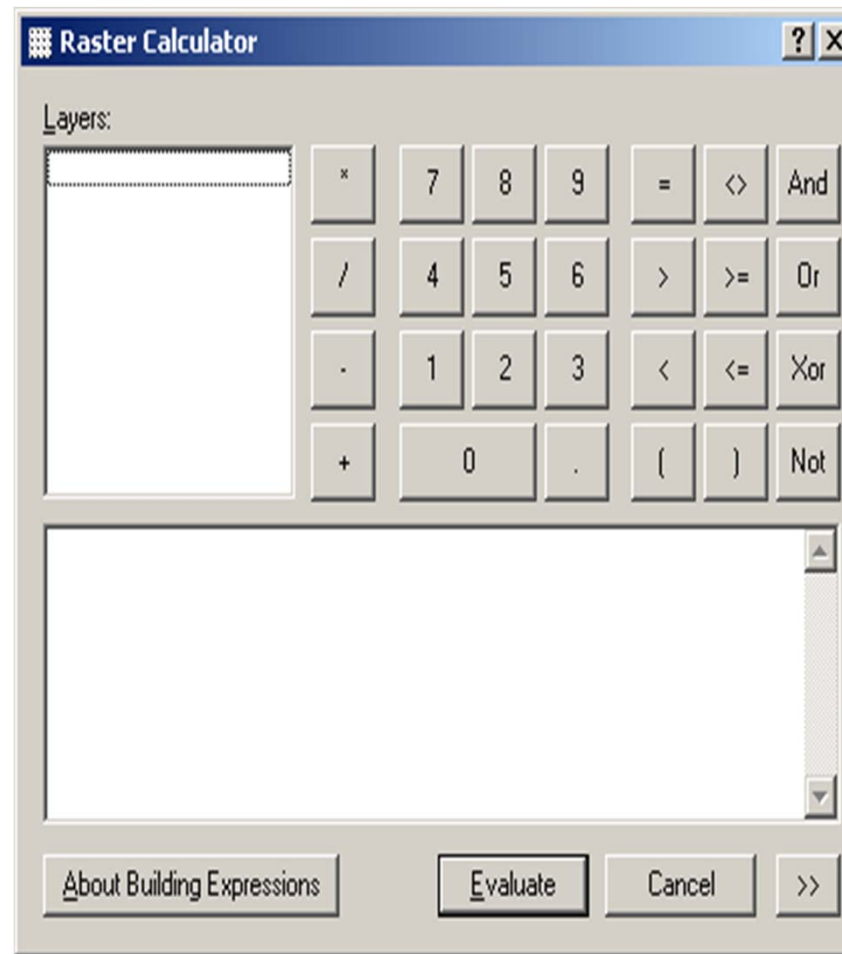
Kriging



== Data Manipulation ==

Methods

Raster Calculator





Data Extraction



Methods

Extract Values to Points

